



 **Marchino**[®]
protecting your car wherever you are



ITALIAN DESIGN

Quality, style, passion: these are the values that have always made car shelters by Marchino stand out.

Products of the highest quality, made entirely of painted, galvanized steel to ensure sturdiness and full weatherproofing.

Stylish, refined finishing as light as a feather that fits smoothly into every setting, lending an exclusive touch of elegance and appeal.

And finally passion. Passion for our work, and respect for our customers and for the environment we are called on to share and pass on - hopefully improved - to future generations. This is why we have been committed for more than fifty years to finding innovative solutions. Cutting edge solutions in terms of technology and design which are ever more complete and customizable, and capable of exciting today and being even more rewarding tomorrow.



QUALITY

Self-supporting painted, zinc-coated steel structure. Box profile aluminium covering. Infinitely expandable modular system catering for any type of installation, including residential, apartment building and commercial parking. No ballast above ground. Supplied with full set of foundation plates and anchor bolts. Regulation sizing for wind and snow loads.

DESIGN

Incredibly light, elegant, clean lines - Finished profile - Customizable with exclusive graphic solutions - Supplied on request with lighting.

ENVIRONMENT

Optional solar PV panel covering - Provision for fitting car charging point - LED lighting - Fitted with guttering for the collection of rainwater.



mmarchino®

alae
italian design

PROTECTION AND REFINED DESIGN

The reassuring protection
of an embrace,
as soft as a caress.



nubila
italian design

THE DISCREET SHAPE OF SHADE

The pleasure of shade
in a sea of elegance.



rugrada
italian design

UNIQUE QUALITY AND DESIGN

Extraordinarily adaptable,
unique, inimitable:
a true stroke... of elegance.





PROTECTION AND REFINED DESIGN

The reassuring protection of an embrace, as soft as a caress.

Alaé is the line of car shelters recommended for anyone seeking the utmost in security for their vehicle, in the knowledge that opting for quality will bring its rewards over time.

Fully made of zinc-coated steel for maximum strength and weatherproofing, Alaé's self-supporting shelters have a stylish finish to suit any setting, and as they use a modular system of installation they can be extended to house any number of vehicles, recommending them in particular for residential, business and commercial parking.

Any RAL finish on request.



Gabbiano			A 350 Load bearing element
Aicône			B 355 Load bearing element
Multiple Gabbiano			Load bearing elements A 350 + B 355
Gabbiano + Aicône			Load bearing elements A 350 + B 355 + C 355
Multiple Aicône			Load bearing elements B 355 + C 355
Albatros			Load bearing elements B 355/2 + C 355/2 + Frangige





gabbiano

Ideal for residential installations with limited space

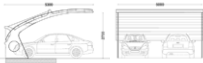


Covering for 1 single car.
Size (m): 5.3 x 2.5 x 2.7 (5m usable length)
Space guaranteed per car (m): 2.5 x 5
Surface area: 13 sqm



airone

Ideal for residential, commercial and company parking



Covering for 2 cars parked side-by-side, extendable in modules.
Size (m): 5.3 x 5 x 2.7 (5m usable length)
Space guaranteed per car (m): 2.5 x 5
Surface area: 26.5 sqm

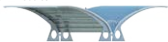


albatros

Ideal for commercial and company parking



Covering for 4 cars, parked head-to-head, extendable in modules.
Size (m): 10.6 x 5 x 2.7
Space guaranteed per car (m): 2.5 x 5
Surface area: 56 sqm





THE DISCREET SHAPE OF SHADE

The pleasure of shade in a sea of elegance.

With Nubila your car is always on vacation: sheltered from the sun, whilst free to revel in the fragrance of summer.

A lightweight line of canopies, hovering in the sky with the refined weightlessness of a cloud.

All-Italian design for captivating quality that continues to enchant day after day. Any RAL finish on request.

Supplied with waterproof or hail-proof PVC tarp available in different colours

Covering for 1-2-4 cars, extendable in modules.
Size (m): 10.6 x 5 x 2.7
Space guaranteed per car (m): 2.5 x 5
Surface area: 56 sqm



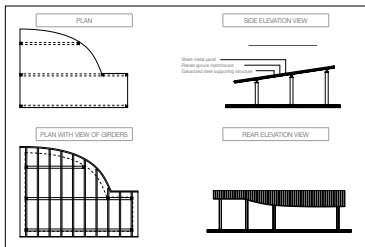


UNIQUE QUALITY AND DESIGN

Extraordinarily adaptable, unique, inimitable: a true stroke... of elegance.

Rugiada is the new line of customizable car shelters that combines the performance Marchino's customers have always appreciated with the utmost versatility in the final design, guaranteeing top quality products matching strength with style, elegance and functionality.

For a unique personality, like yours. Any RAL finish on request.





RESEARCH AND QUALITY

Specializing in the cutting and bending of small and large stainless steel sheeting, ever since its founding in the early 1960s Marchino srl has stood out for its innovative approach to the market. Attaching great importance to the needs of tomorrow, Marchino has always presented cutting edge solutions to a constantly growing domestic, and now increasingly international clientele.

To be ever competitive Marchino has focused on research and the use of the most innovative technology, which represent a source of pride for its production department of over 3000 sqm.

Thanks to its long-standing experience and ability to anticipate trends, Marchino is able to offer its customers more and more services and complex types of processing, such as the innovative Alae, Nubila and Rugiada ranges of car shelters featuring exceptional performance and authentically Italian elegance.

MARCHINO SRL

Strada Valle, 6 - 12060 POCAPAGLIA (CN)
Tel +39.0172/493714 - Fax +39.0172/493644
www.copertureauto.it - info@copertureauto.it

PROCESSINGS

- Laser cutting
- Plasma cutting
- Bending
- Calendering
- Welding
- Metal structural work

